

# CATÁLOGO CELOSÍAS y FIGURAS



# CELOSÍAS Y FIGURAS

1 FIGURAS. Tenemos un amplio catálogo de figuras y celosías en hierro y acero inoxidable



ELIGE UN DISEÑO  
(O MÁNDANOS UNO  
QUE YA TENGAS O TE  
GUSTE)



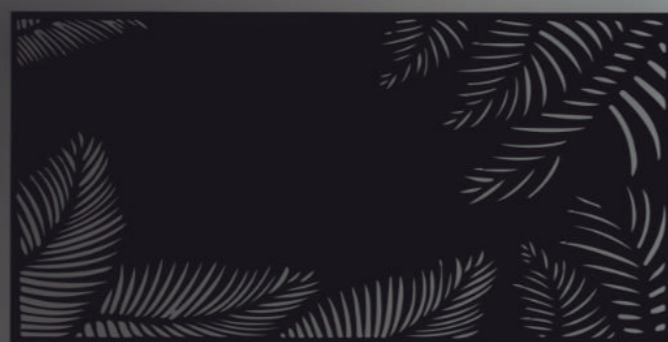
ELIGE UNAS MEDIDAS



ELIGE UN MATERIAL



ELIGE UN ESPESOR



2 CELOSÍAS. Podemos hacer cualquier tipo de diseño y personalizarlo al 100% eligiendo diseño, material y espesor.



3 DIFERENTES USOS. Las celosías pueden utilizarse para múltiples cosas, como cabeceros de cama, barandillas de terraza, cuadros... ¡Las opciones son infinitas!

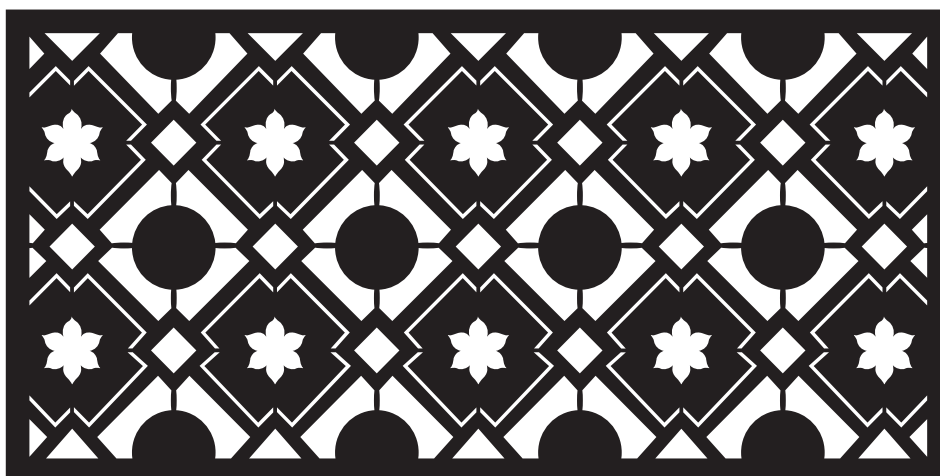


SI NO ENCUENTRAS LO QUE BUSCAS

LO DISEÑAMOS

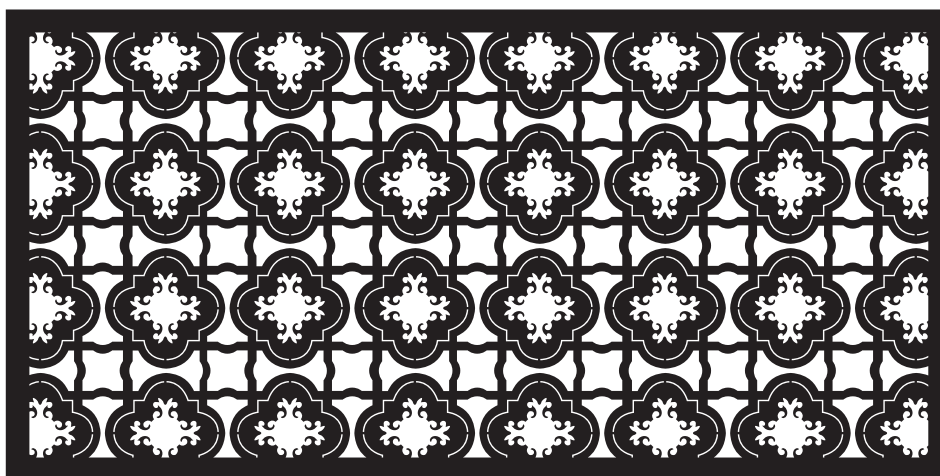
Ref. C001

Formato: 1990x990mm  
Material: Hierro  
Espesor: 2 mm



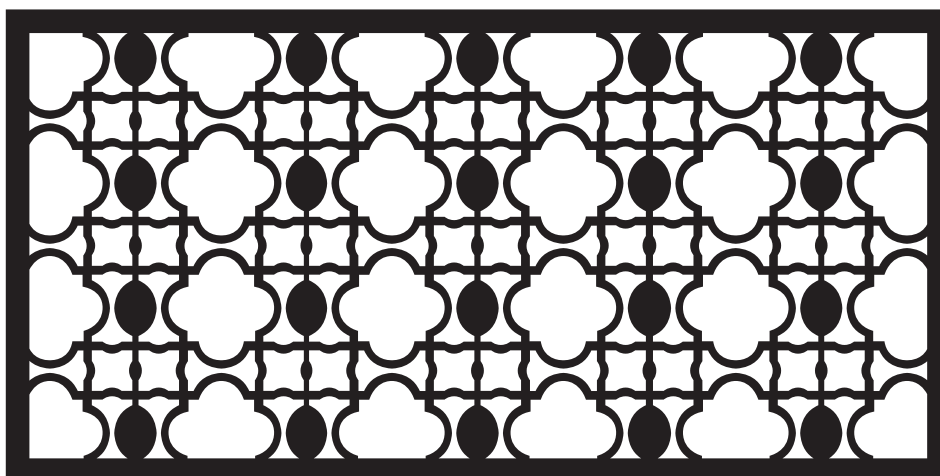
Ref. C002

Formato: 1990x990mm  
Material: Hierro  
Espesor: 2 mm



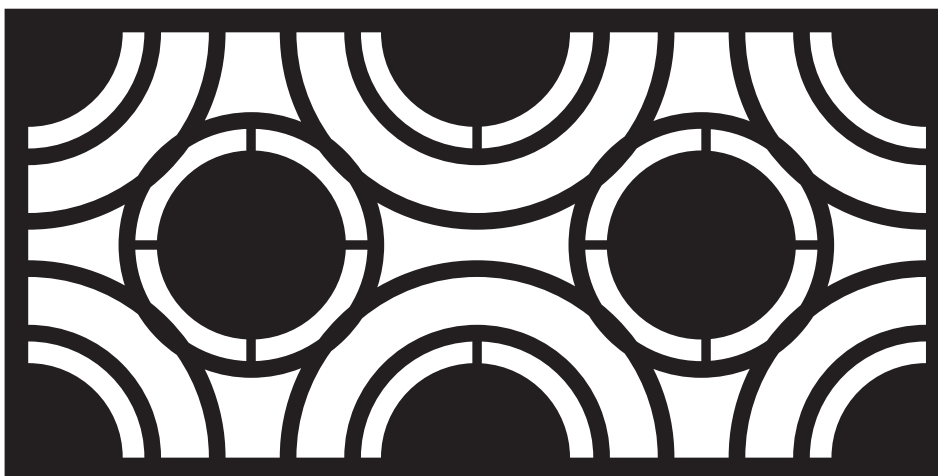
Ref. C003

Formato: 1990x990mm  
Material: Hierro  
Espesor: 2 mm



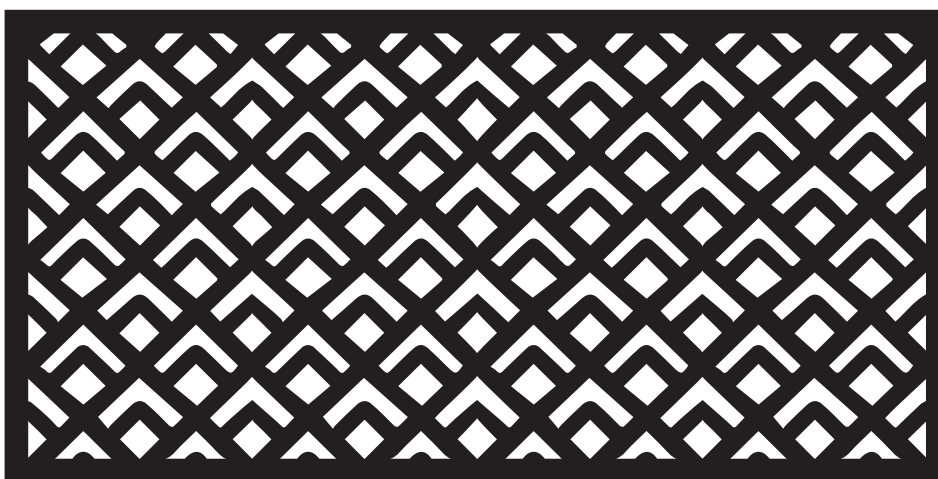
Ref. C004

Formato: 1900x990mm  
Material: Hierro  
Espesor: 2 mm



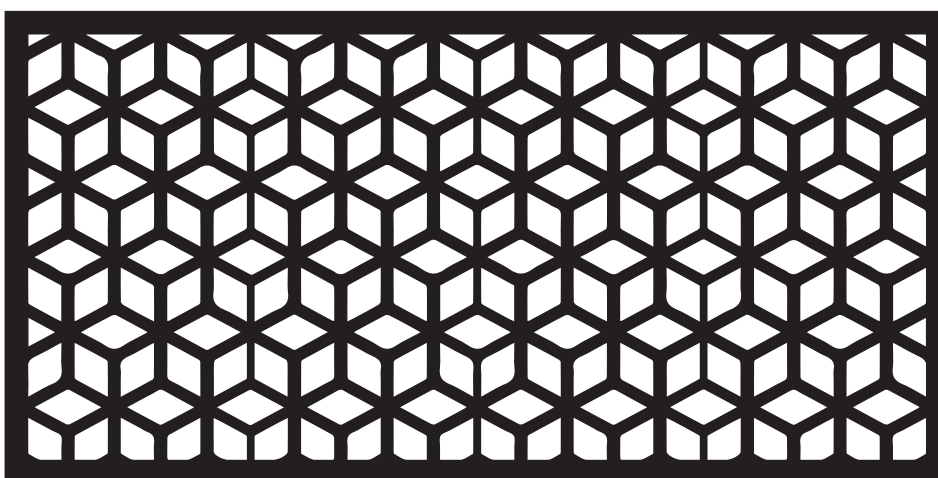
Ref. C005

Formato: 1900x990mm  
Material: Hierro  
Espesor: 2 mm



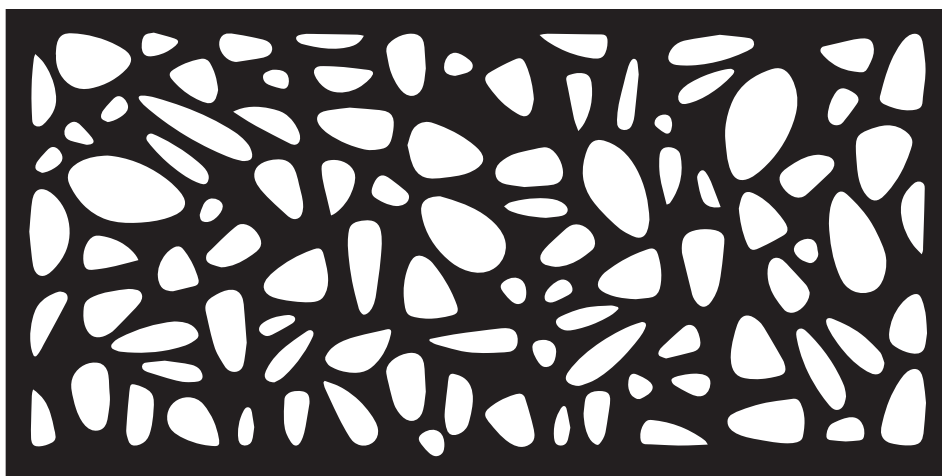
Ref. C006

Formato: 1900x990mm  
Material: Hierro  
Espesor: 2 mm



Ref. C007

Formato: 1990x990mm  
Material: Hierro  
Espesor: 2 mm



Ref. C008

Formato: 1990x990mm  
Material: Hierro  
Espesor: 2 mm



Ref. C009

Formato: 1990x990mm  
Material: Hierro  
Espesor: 2 mm



Ref. C010

Formato: 1990x990mm  
Material: Hierro  
Espesor: 2 mm



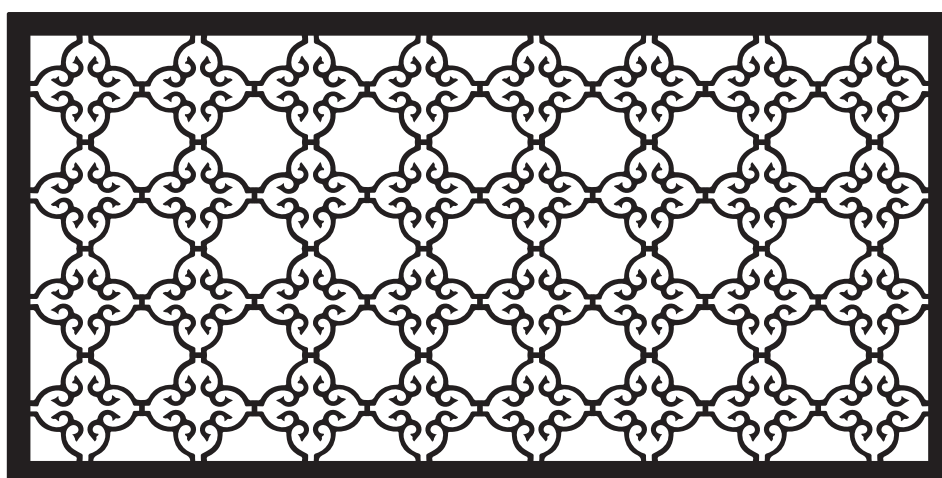
Ref. C011

Formato: 1990x990mm  
Material: Hierro  
Espesor: 2 mm



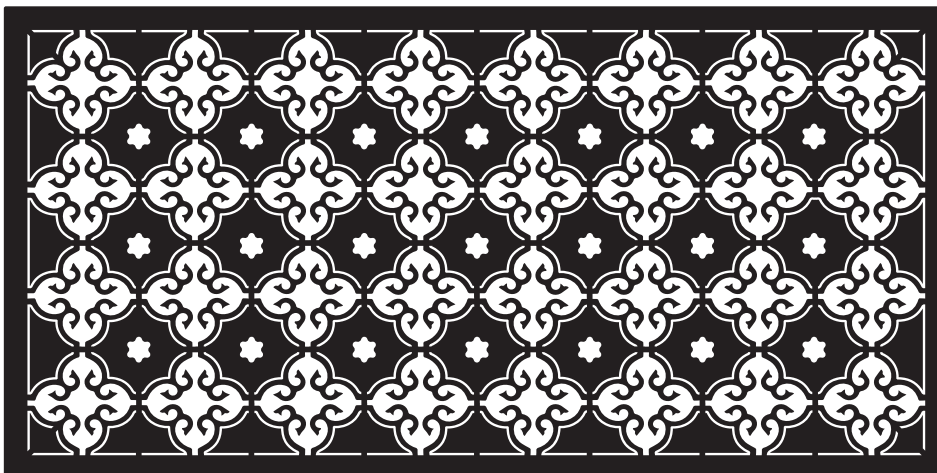
Ref. C012

Formato: 1990x990mm  
Material: Hierro  
Espesor: 2 mm



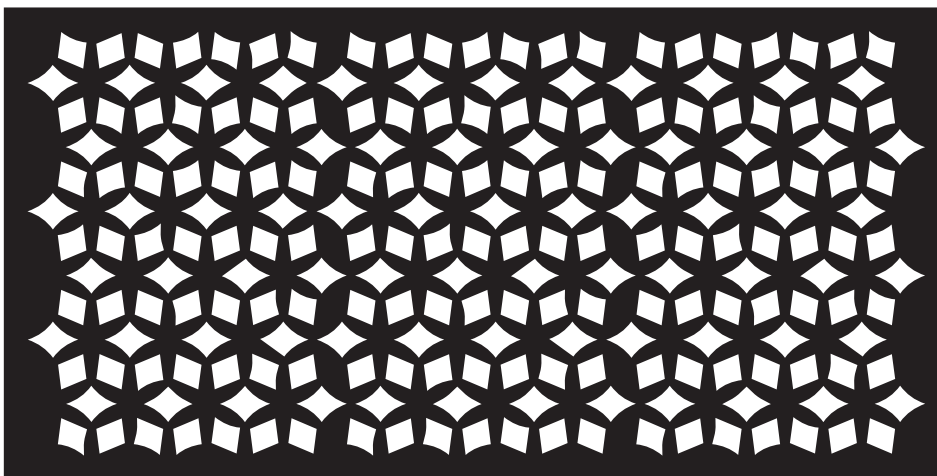
Ref. C013

Formato: 1990x990mm  
Material: Hierro  
Espesor: 2 mm



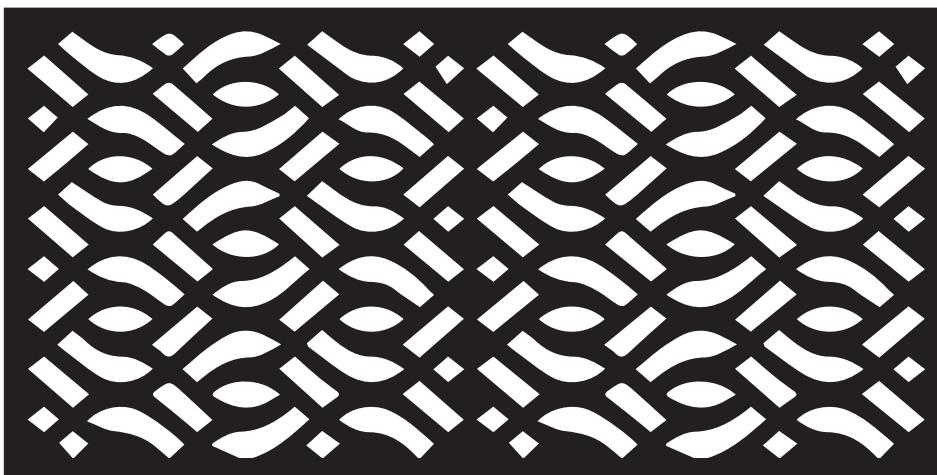
Ref. C014

Formato: 1990x990mm  
Material: Hierro  
Espesor: 2 mm



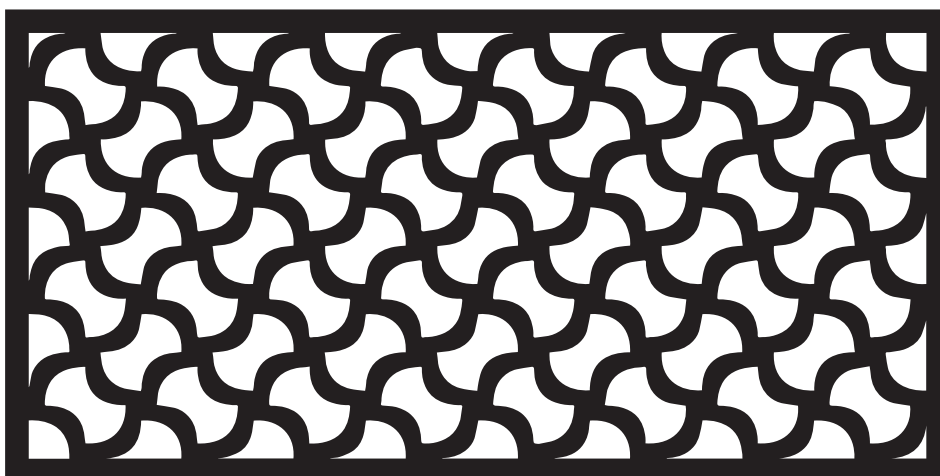
Ref. C015

Formato: 1990x990mm  
Material: Hierro  
Espesor: 2 mm



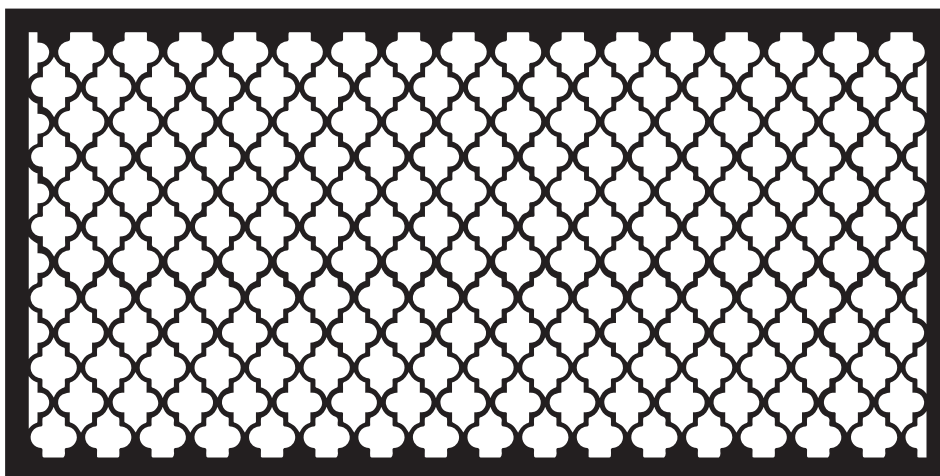
Ref. C016

Formato: 1990x990mm  
Material: Hierro  
Espesor: 2 mm



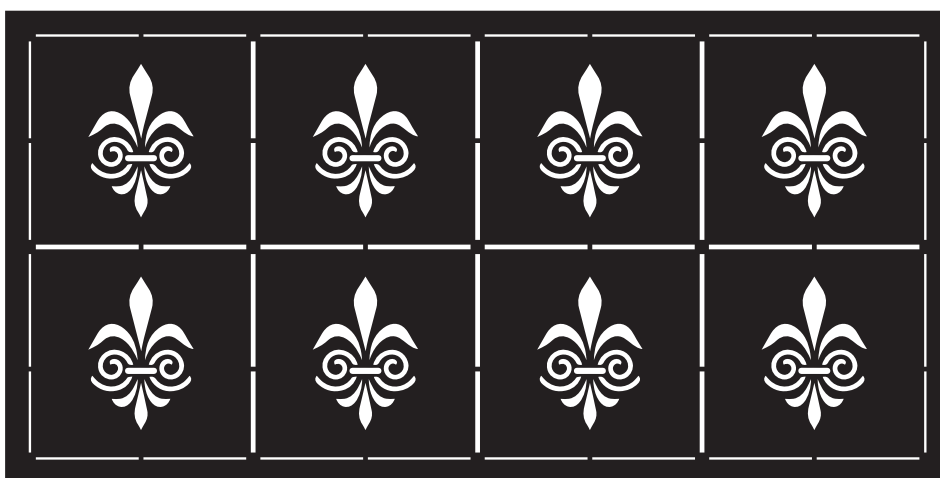
Ref. C017

Formato: 1990x990mm  
Material: Hierro  
Espesor: 2 mm



Ref. C018

Formato: 1990x990mm  
Material: Hierro  
Espesor: 2 mm





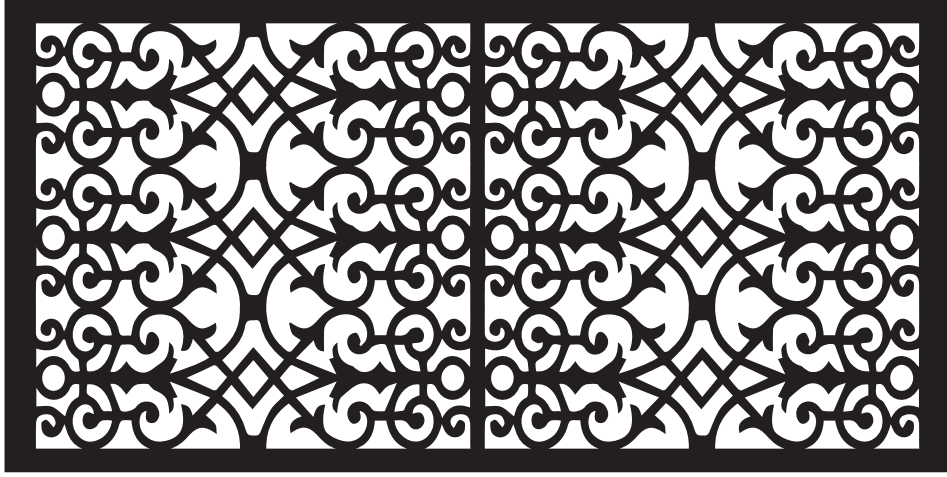
Ref. C019

Formato: 1990x990mm  
Material: Hierro  
Espesor: 2 mm



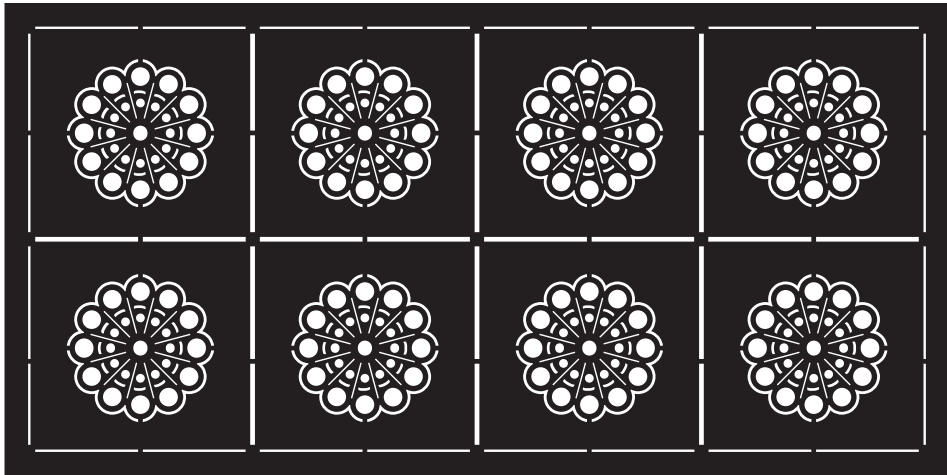
Ref. C020

Formato: 1990x990mm  
Material: Hierro  
Espesor: 2 mm



Ref. C021

Formato: 1990x990mm  
Material: Hierro  
Espesor: 2 mm



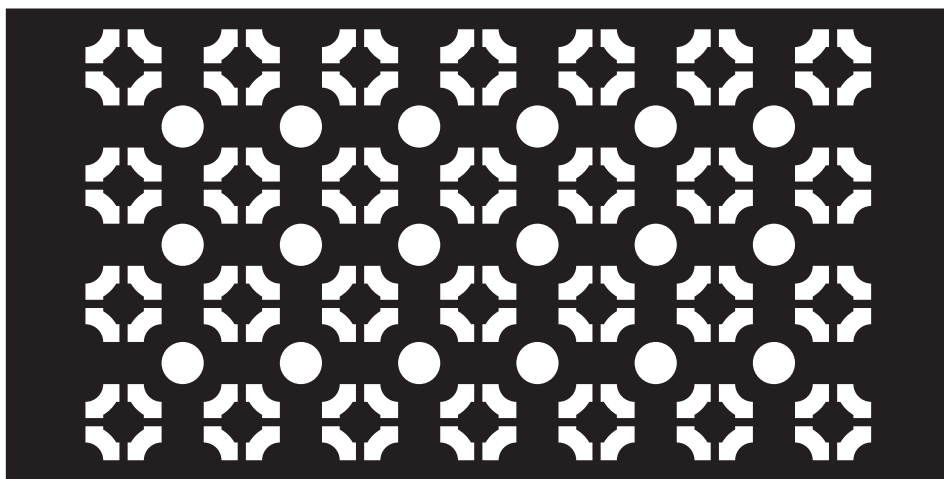
Ref. C022

Formato: 1990x990mm  
Material: Hierro  
Espesor: 2 mm



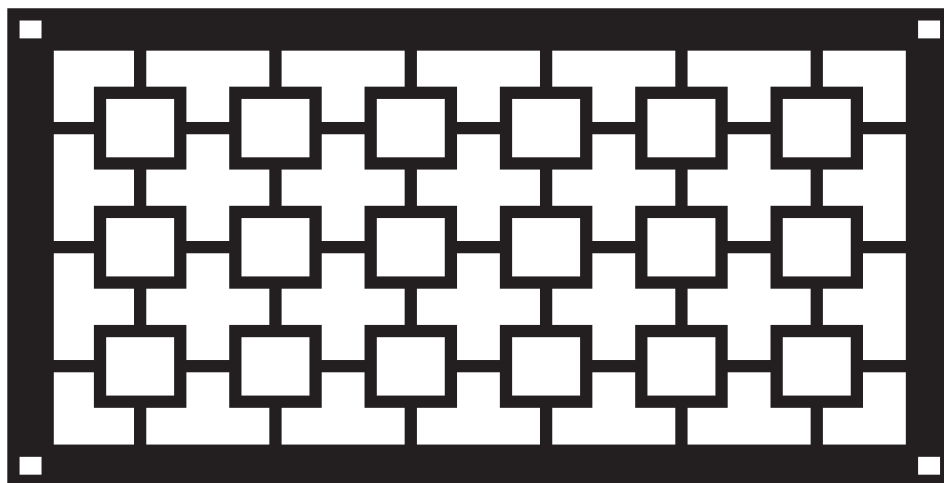
Ref. C023

Formato: 1990x990mm  
Material: Hierro  
Espesor: 2 mm



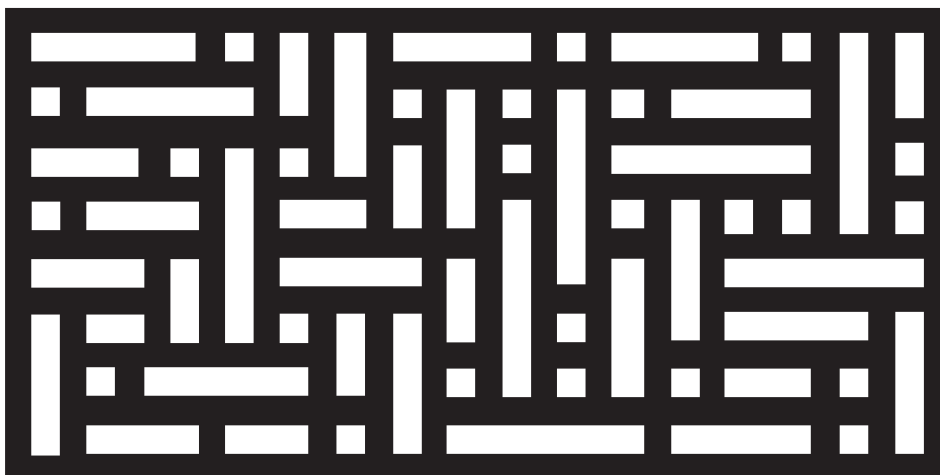
Ref. C024

Formato: 1990x990mm  
Material: Hierro  
Espesor: 2 mm



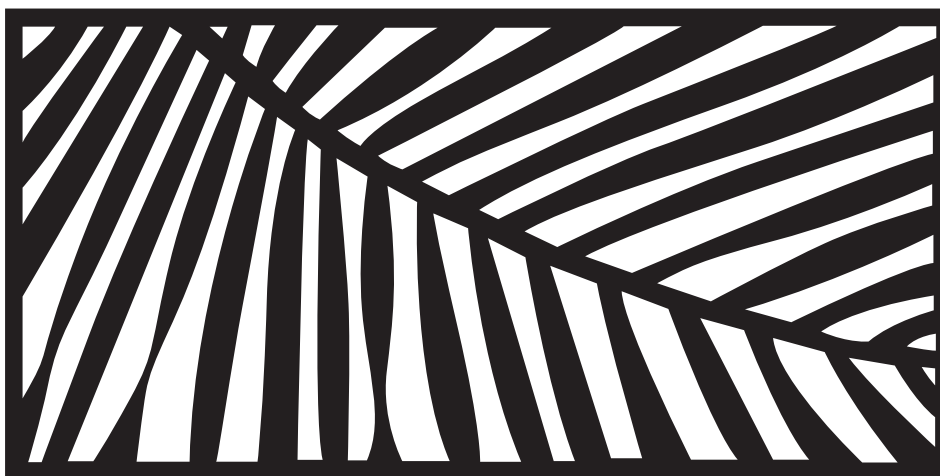
Ref. C025

Formato: 1990x990mm  
Material: Hierro  
Espesor: 2 mm



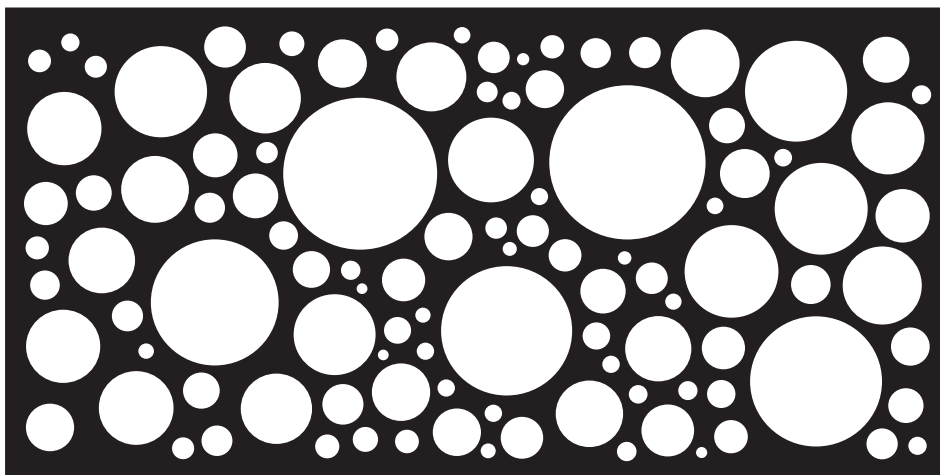
Ref. C026

Formato: 1990x990mm  
Material: Hierro  
Espesor: 2 mm



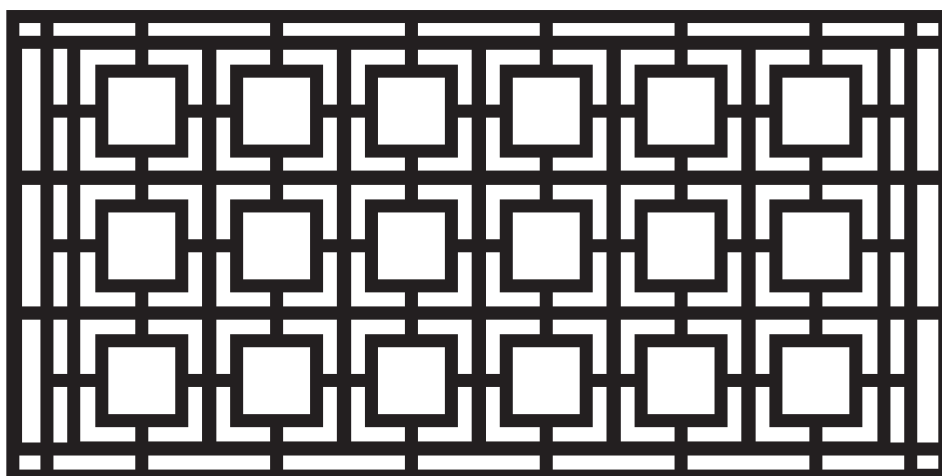
Ref. C027

Formato: 1990x990mm  
Material: Hierro  
Espesor: 2 mm



Ref. C028

Formato: 1990x990mm  
Material: Hierro  
Espesor: 2 mm



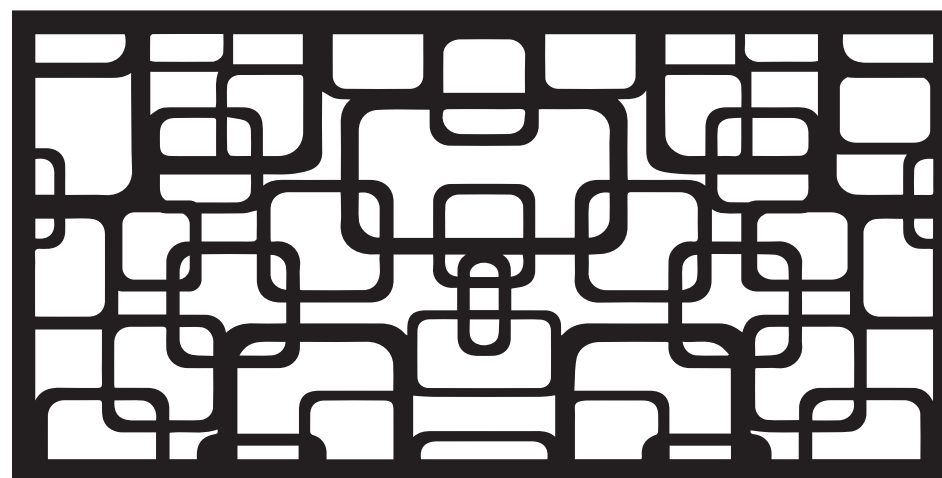
Ref. C029

Formato: 1990x990mm  
Material: Hierro  
Espesor: 2 mm



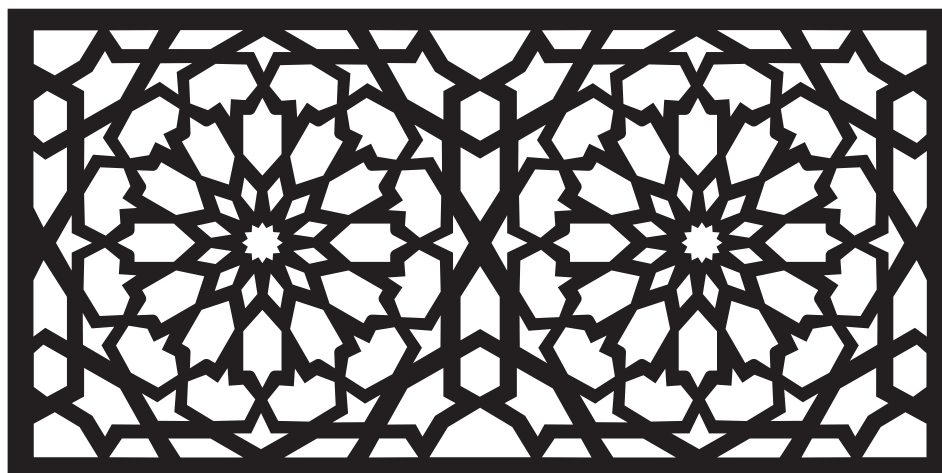
Ref. C030

Formato: 1990x990mm  
Material: Hierro  
Espesor: 2 mm



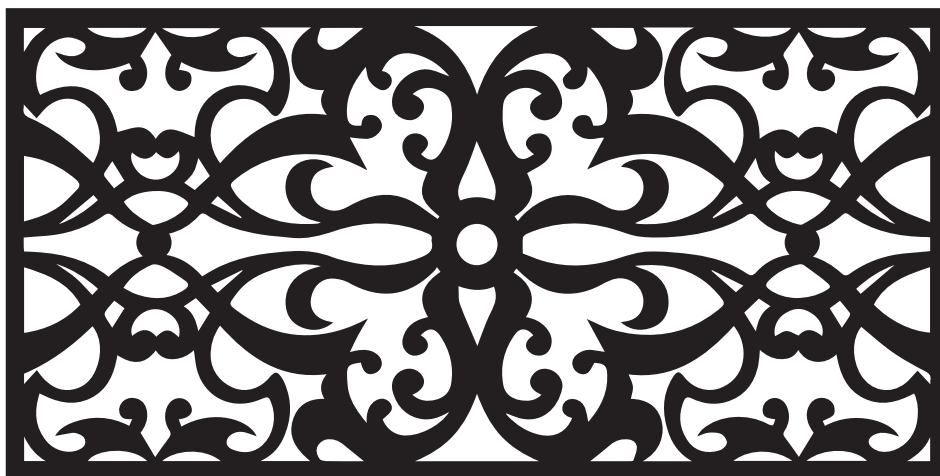
Ref. C031

Formato: 1990x990mm  
Material: Hierro  
Espesor: 2 mm



Ref. C032

Formato: 1990x990mm  
Material: Hierro  
Espesor: 2 mm



Ref. C033

Formato: 1990x990mm  
Material: Hierro  
Espesor: 2 mm



Ref. C034

Formato: 1990x990mm  
Material: Hierro  
Espesor: 2 mm



Ref. C037

Formato: 1990x990mm  
Material: Hierro  
Espesor: 2 mm



Ref. C035

Formato: 1990x990mm  
Material: Hierro  
Espesor: 2 mm



Ref. C038

Formato: 1990x990mm  
Material: Hierro  
Espesor: 2 mm



Ref. C036

Formato: 1990x990mm  
Material: Hierro  
Espesor: 2 mm



Ref. C039

Formato: 1990x990mm  
Material: Hierro  
Espesor: 2 mm



Ref. C040

Formato: 1990x990mm  
Material: Hierro  
Espesor: 2 mm



Ref. C043

Formato: 1990x990mm  
Material: Hierro  
Espesor: 2 mm



Ref. C041

Formato: 1990x990mm  
Material: Hierro  
Espesor: 2 mm



Ref. C044

Formato: 1990x990mm  
Material: Hierro  
Espesor: 2 mm



Ref. C042

Formato: 1990x990mm  
Material: Hierro  
Espesor: 2 mm



Ref. C045

Formato: 1990x990mm  
Material: Hierro  
Espesor: 2 mm



Ref. C046

Formato: 1990x990mm  
Material: Hierro  
Espesor: 2 mm



Ref. C049

Formato: 1990x990mm  
Material: Hierro  
Espesor: 2 mm



Ref. C047

Formato: 1990x990mm  
Material: Hierro  
Espesor: 2 mm



Ref. C050

Formato: 1990x990mm  
Material: Hierro  
Espesor: 2 mm



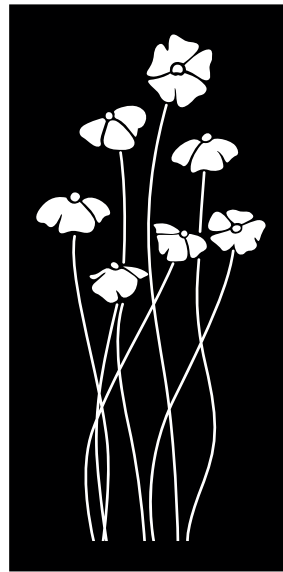
Ref. C048

Formato: 1990x990mm  
Material: Hierro  
Espesor: 2 mm



Ref. C051

Formato: 1990x990mm  
Material: Hierro  
Espesor: 2 mm





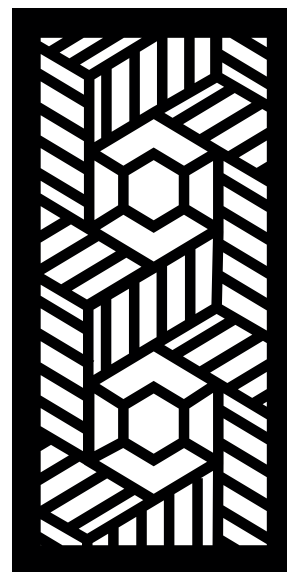
Ref. C052

Formato: 1990x990mm  
Material: Hierro  
Espesor: 2 mm



Ref. C055

Formato: 1990x990mm  
Material: Hierro  
Espesor: 2 mm



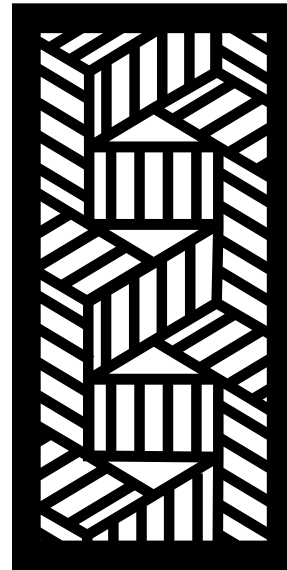
Ref. C053

Formato: 1990x990mm  
Material: Hierro  
Espesor: 2 mm



Ref. C056

Formato: 1990x990mm  
Material: Hierro  
Espesor: 2 mm



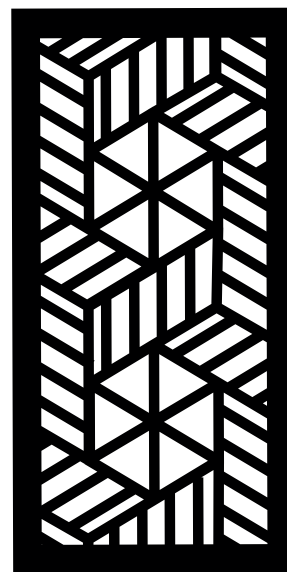
Ref. C054

Formato: 1990x990mm  
Material: Hierro  
Espesor: 2 mm



Ref. C057

Formato: 1990x990mm  
Material: Hierro  
Espesor: 2 mm



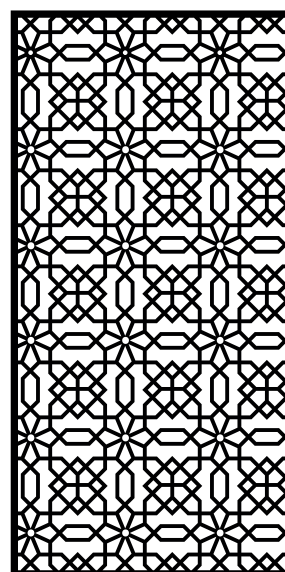
Ref. C058

Formato: 1990x990mm  
Material: Hierro  
Espesor: 2 mm



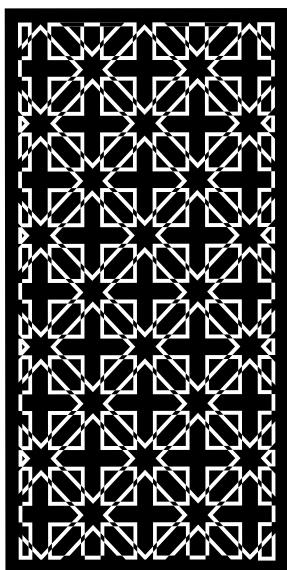
Ref. C061

Formato: 1990x990mm  
Material: Hierro  
Espesor: 2 mm



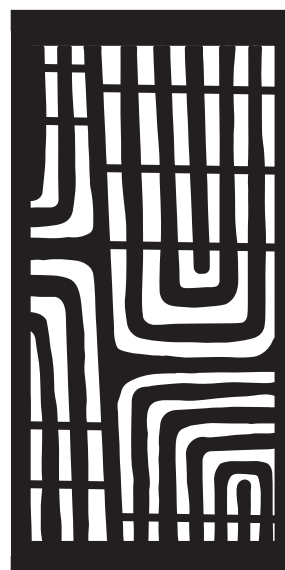
Ref. C059

Formato: 1990x990mm  
Material: Hierro  
Espesor: 2 mm



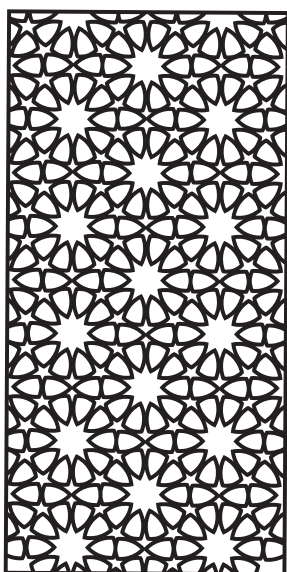
Ref. C062

Formato: 1990x990mm  
Material: Hierro  
Espesor: 2 mm



Ref. C060

Formato: 1990x990mm  
Material: Hierro  
Espesor: 2 mm



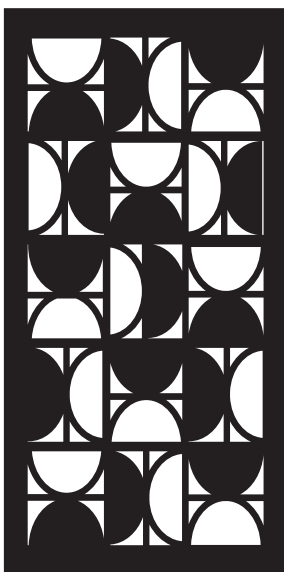
Ref. C063

Formato: 1990x990mm  
Material: Hierro  
Espesor: 2 mm



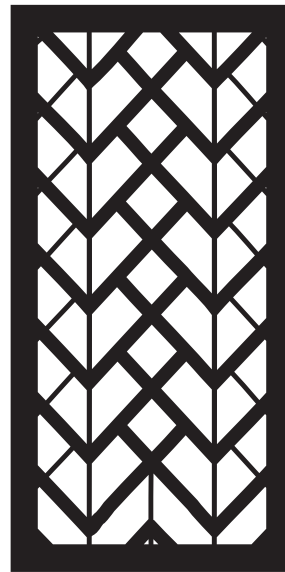
Ref. C064

Formato: 1990x990mm  
Material: Hierro  
Espesor: 2 mm



Ref. C067

Formato: 1990x990mm  
Material: Hierro  
Espesor: 2 mm



Ref. C065

Formato: 1990x990mm  
Material: Hierro  
Espesor: 2 mm



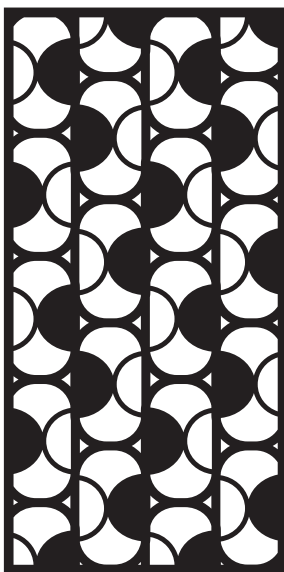
Ref. C068

Formato: 1990x990mm  
Material: Hierro  
Espesor: 2 mm



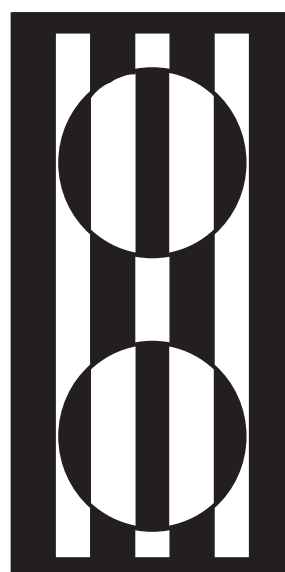
Ref. C066

Formato: 1990x990mm  
Material: Hierro  
Espesor: 2 mm



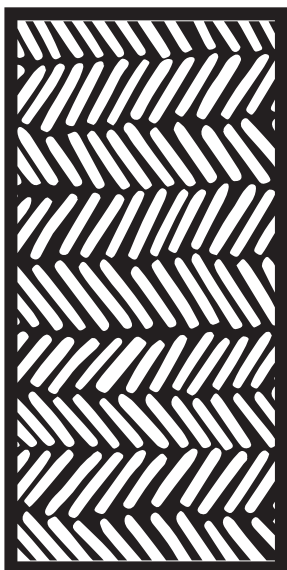
Ref. C069

Formato: 1990x990mm  
Material: Hierro  
Espesor: 2 mm



Ref. C070

Formato: 1990x990mm  
Material: Hierro  
Espesor: 2 mm



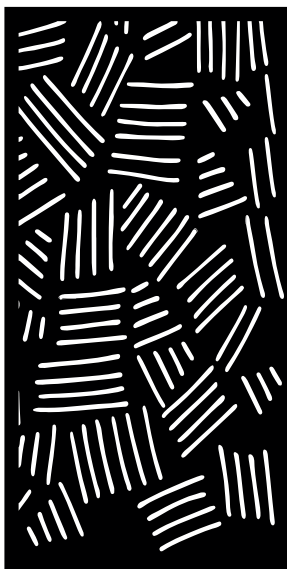
Ref. C073

Formato: 1990x990mm  
Material: Hierro  
Espesor: 2 mm



Ref. C071

Formato: 1990x990mm  
Material: Hierro  
Espesor: 2 mm



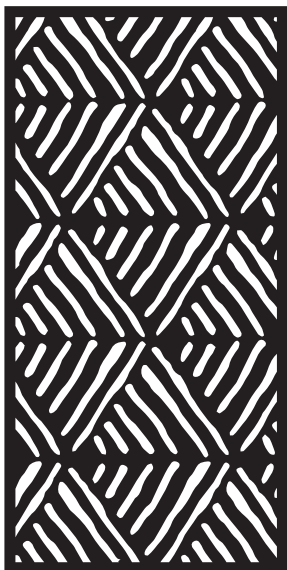
Ref. C074

Formato: 1990x990mm  
Material: Hierro  
Espesor: 2 mm



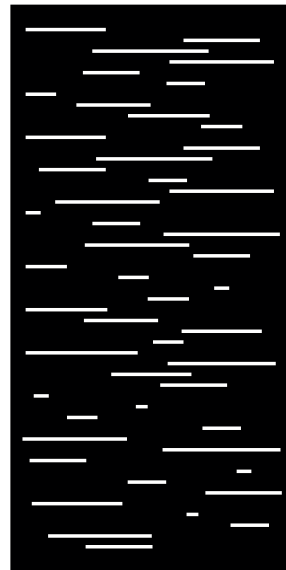
Ref. C072

Formato: 1990x990mm  
Material: Hierro  
Espesor: 2 mm



Ref. C075

Formato: 1990x990mm  
Material: Hierro  
Espesor: 2 mm



Ref. C076

Formato: 1990x990mm  
Material: Hierro  
Espesor: 2 mm



Ref. C077

Formato: 1990x990mm  
Material: Hierro  
Espesor: 2 mm



Ref. C078

Formato: 1990x990mm  
Material: Hierro  
Espesor: 2 mm



Ref. C080

Formato: 1990x990mm  
Material: Hierro  
Espesor: 2 mm



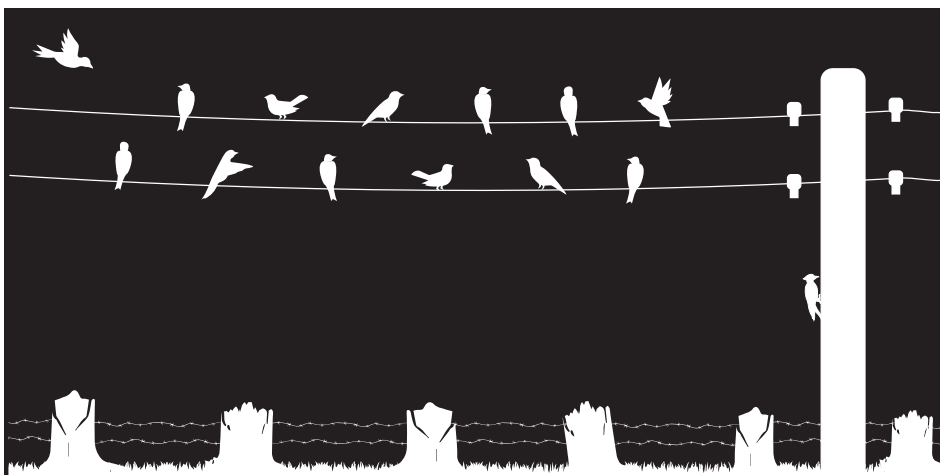
Ref. C081

Formato: 1990x990mm  
Material: Hierro  
Espesor: 2 mm



Ref. C082

Formato: 1990x990mm  
Material: Hierro  
Espesor: 2 mm



Ref. C083

Formato: 1990x990mm  
Material: Hierro  
Espesor: 2 mm



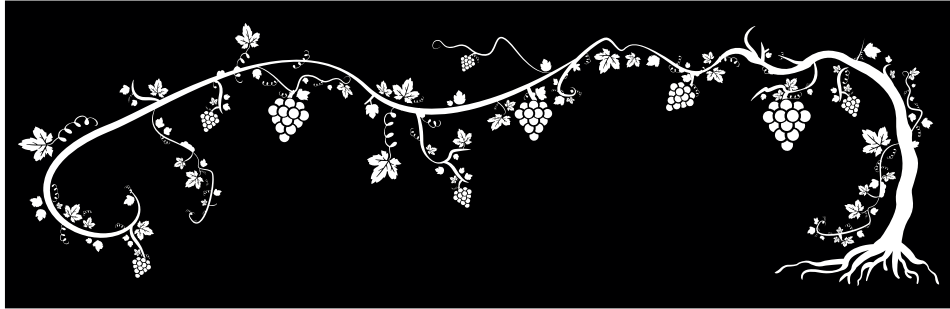
Ref. C084

Formato: 1990x990mm  
Material: Hierro  
Espesor: 2 mm



Ref. C085

Formato: 1990mmX650mm  
Material: Hierro  
Espesor: 2 mm



Ref. C086

Formato: 500x500mm  
Material: Hierro  
Espesor: 2 mm



Ref. C087

Formato: 500x500mm  
Material: Hierro  
Espesor: 2 mm



Ref. C088

Formato: 500x500mm  
Material: Hierro  
Espesor: 2 mm





Ref. C089

Formato: 500x500mm  
Material: Hierro  
Espesor: 2 mm



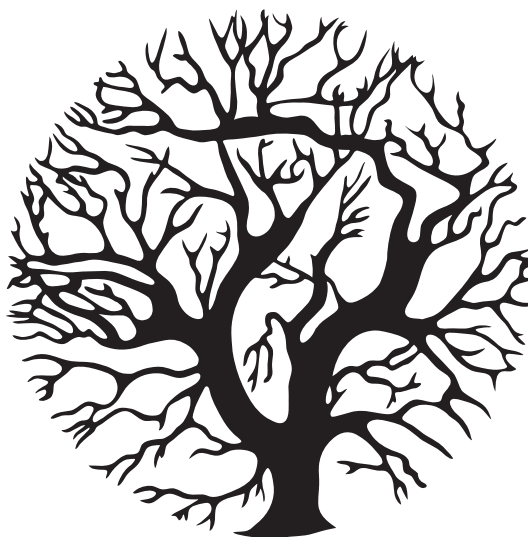
Ref. C090

Formato: 500x500mm  
Material: Hierro  
Espesor: 2 mm



Ref. C091

Formato: 500x500mm  
Material: Hierro  
Espesor: 2 mm



Ref. C092

Formato: 500x500mm  
Material: Hierro  
Espesor: 2 mm



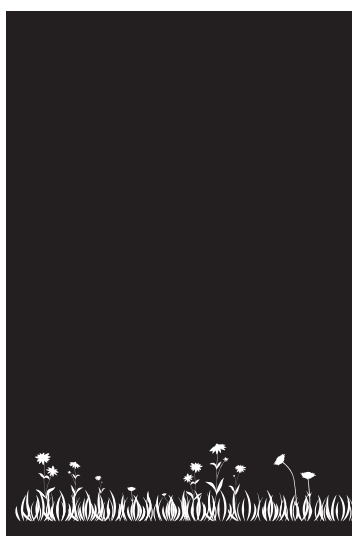
Ref. C093

Formato: 1000x1500mm  
Material: Hierro  
Espesor: 2 mm



Ref. C094

Formato: 1000x1500mm  
Material: Hierro  
Espesor: 2 mm



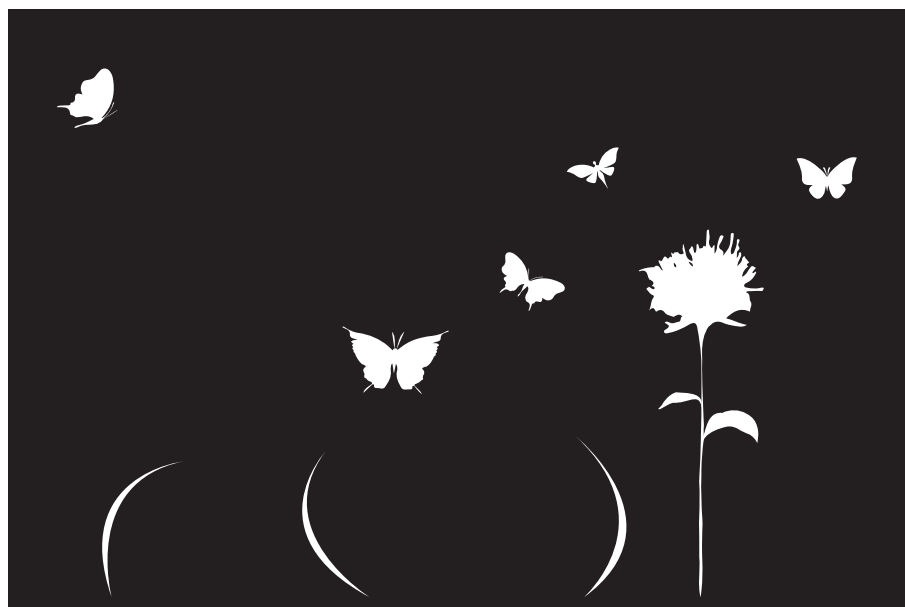
Ref. C095

Formato: 51000x1500mm  
Material: Hierro  
Espesor: 2 mm



Ref. C096

Formato: 1000x1500mm  
Material: Hierro  
Espesor: 2 mm



Ref. C097

Formato: 1000x15000mm  
Material: Hierro  
Espesor: 2 mm



Ref. C098

Formato: 1000x1500mm  
Material: Hierro  
Espesor: 2 mm



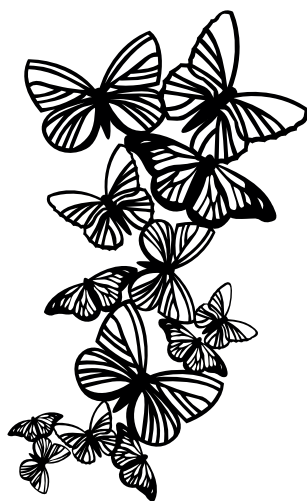
Ref. C099

Formato: 1000x1500mm  
Material: Hierro  
Espesor: 2 mm



Ref. C100

Formato: 500x300mm  
Material: Hierro  
Espesor: 2 mm



Ref. C101

Formato: 500x323mm  
Material: Hierro  
Espesor: 2 mm



Ref. C102

Formato: 500x192mm  
Material: Hierro  
Espesor: 2 mm



Ref. C103

Formato: 500x671 mm  
Material: Hierro  
Espesor: 2 mm



Ref. C104

Formato: 500x240mm  
Material: Hierro  
Espesor: 2 mm



Ref. C105

Formato: 500x415mm  
Material: Hierro  
Espesor: 2 mm



Ref. C106

Formato: 500x311mm  
Material: Hierro  
Espesor: 2 mm



Ref. C107

Formato: 500x193mm  
Material: Hierro  
Espesor: 2 mm



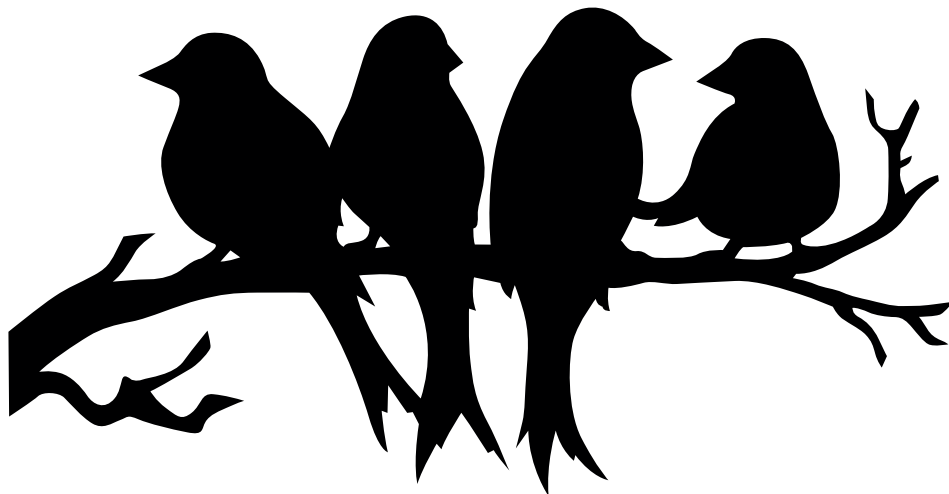
Ref. C108

Formato: 500x275mm  
Material: Hierro  
Espesor: 2 mm



Ref. C109

Formato: 500x258mm  
Material: Hierro  
Espesor: 2 mm



Ref. C110

Formato: 500x260mm  
Material: Hierro  
Espesor: 2 mm



Ref. C111

Formato: 500x218mm  
Material: Hierro  
Espesor: 2 mm



Ref. C112

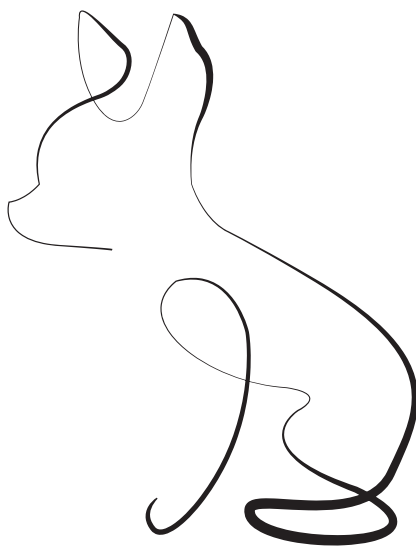
Formato: 500x266mm  
Material: Hierro  
Espesor: 2 mm





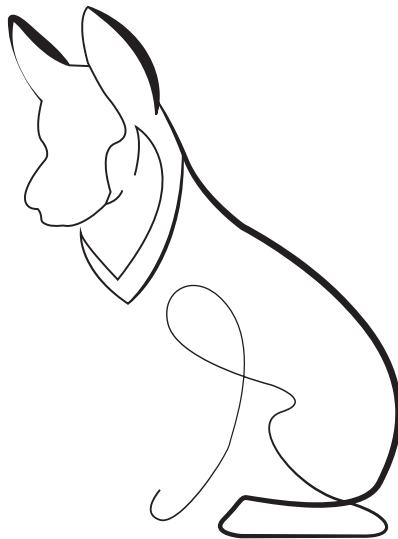
Ref. C113

Formato: 230x300mm  
Material: Hierro  
Espesor: 2 mm



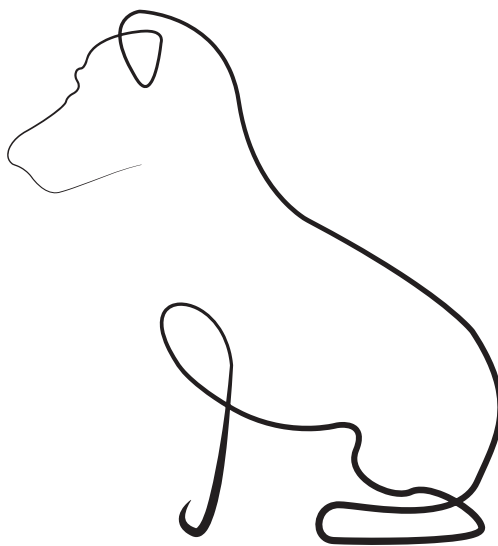
Ref. C114

Formato: 216x300mm  
Material: Hierro  
Espesor: 2 mm



Ref. C115

Formato: 300x280mm  
Material: Hierro  
Espesor: 2 mm



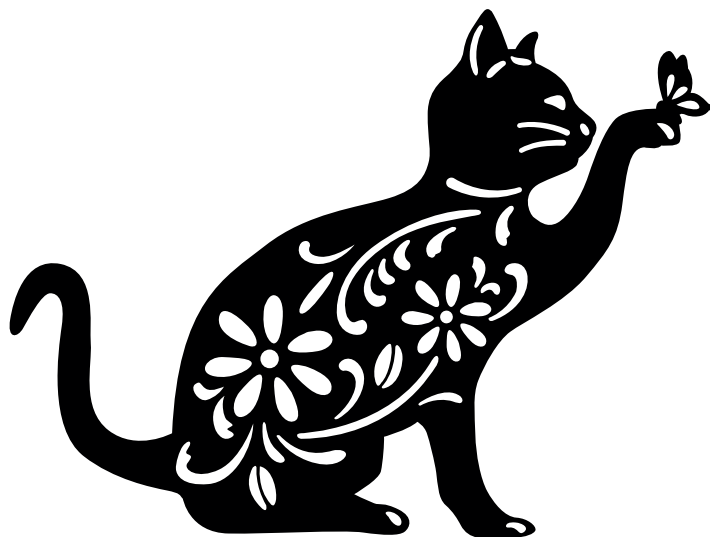
Ref. C116

Formato: 335x300  
Material: Hierro  
Espesor: 2 mm



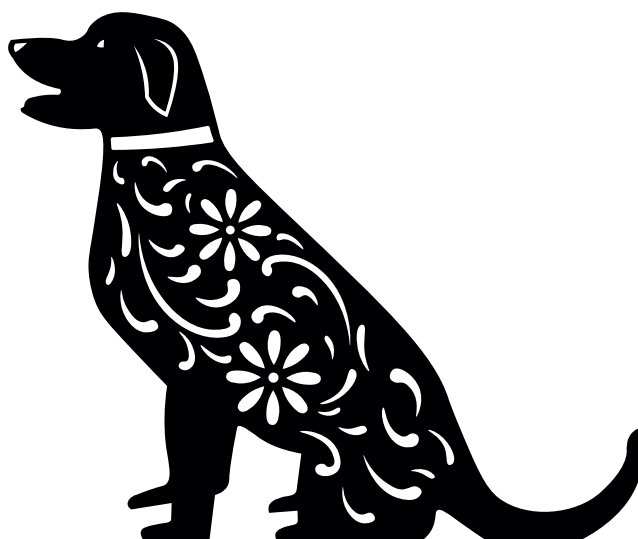
Ref. C117

Formato: 335x300  
Material: Hierro  
Espesor: 2 mm



Ref. C118

Formato: 250x300mm  
Material: Hierro  
Espesor: 2 mm



Ref. C119

Formato: 1990x990mm  
Material: Hierro  
Espesor: 2 mm



Ref. C120

Formato: 1990x990mm  
Material: Hierro  
Espesor: 2 mm



Ref. C121

Formato: 1990x990mm  
Material: Hierro  
Espesor: 2 mm



Ref. C122

Formato: 1990x990mm  
Material: Hierro  
Espesor: 2 mm



Ref. C123

Formato: 1990x990mm  
Material: Hierro  
Espesor: 2 mm



Ref. C124

Formato: 1990x990mm  
Material: Hierro  
Espesor: 2 mm



Ref. C125

Formato: 1990x990mm  
Material: Hierro  
Espesor: 2 mm



Ref. C126

Formato: 1990x990mm  
Material: Hierro  
Espesor: 2 mm



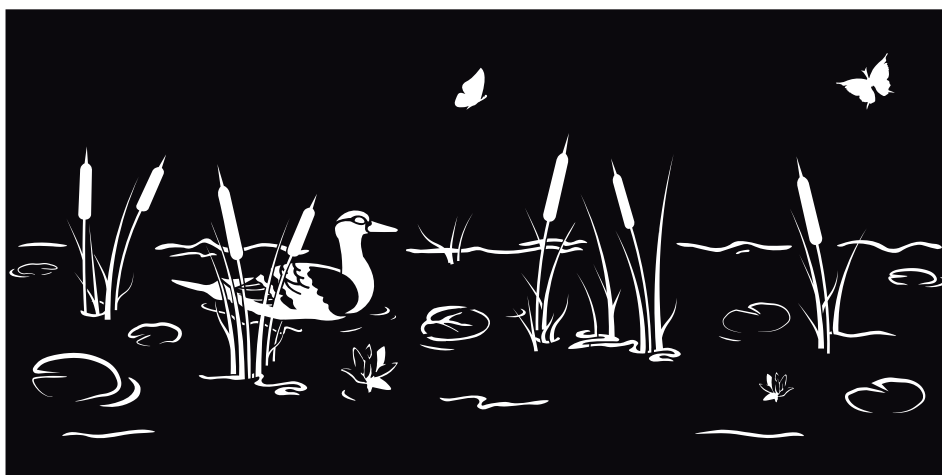
Ref. C127

Formato: 1990x990mm  
Material: Hierro  
Espesor: 2 mm



Ref. C128

Formato: 1990x990mm  
Material: Hierro  
Espesor: 2 mm



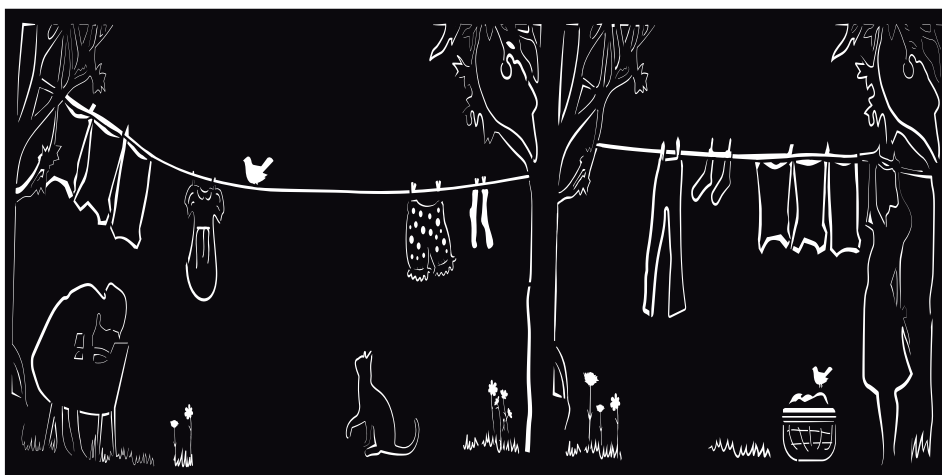
Ref. C129

Formato: 1990x990mm  
Material: Hierro  
Espesor: 2 mm



Ref. C130

Formato: 1990x990mm  
Material: Hierro  
Espesor: 2 mm



Ref. C131

Formato: 1990x990mm  
Material: Hierro  
Espesor: 2 mm



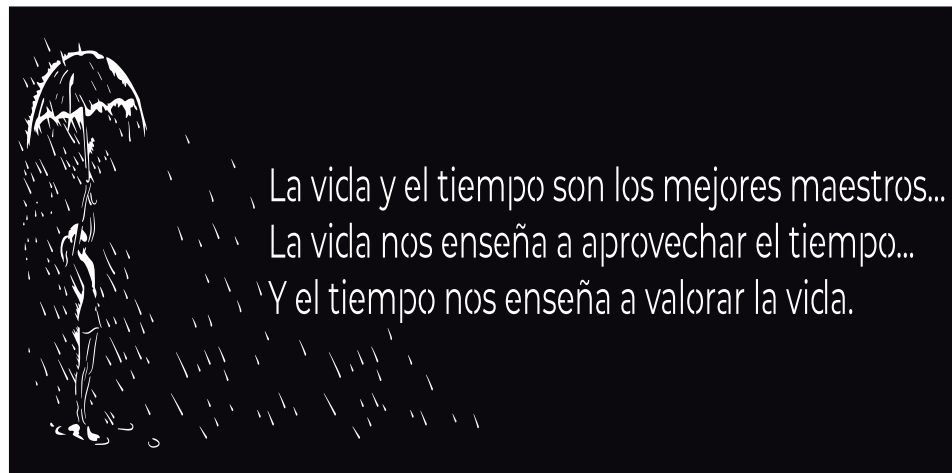
Ref. C132

Formato: 1990x990mm  
Material: Hierro  
Espesor: 2 mm



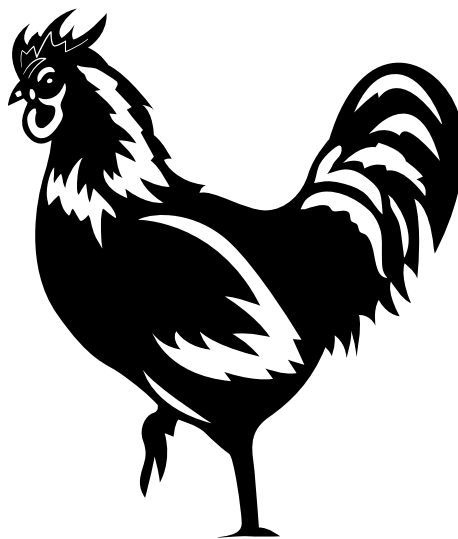
Ref. C133

Formato: 1990x990mm  
Material: Hierro  
Espesor: 2 mm



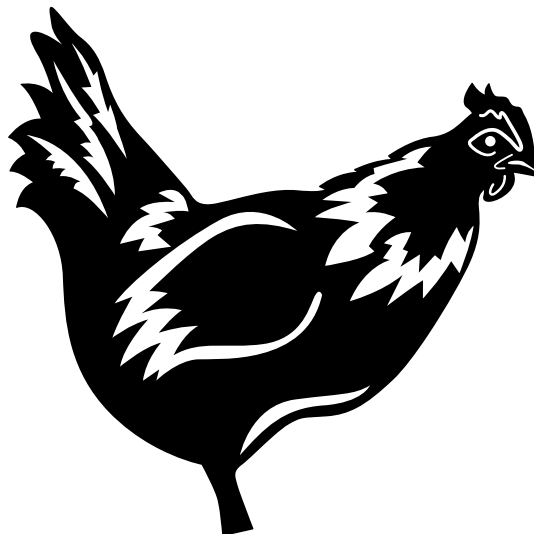
Ref. S001

Formato: 400x464mm  
Material: Hierro  
Espesor: 2 mm



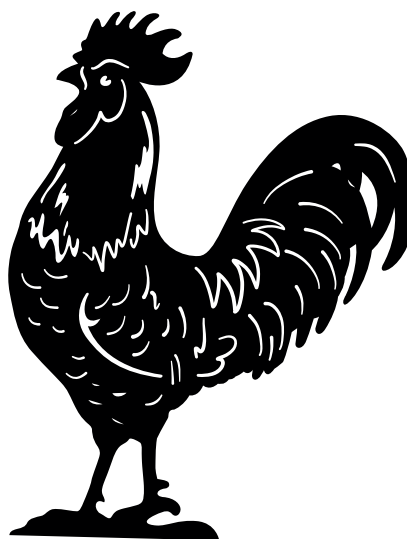
Ref. S002

Formato: 400x397mm  
Material: Hierro  
Espesor: 2 mm



Ref. S003

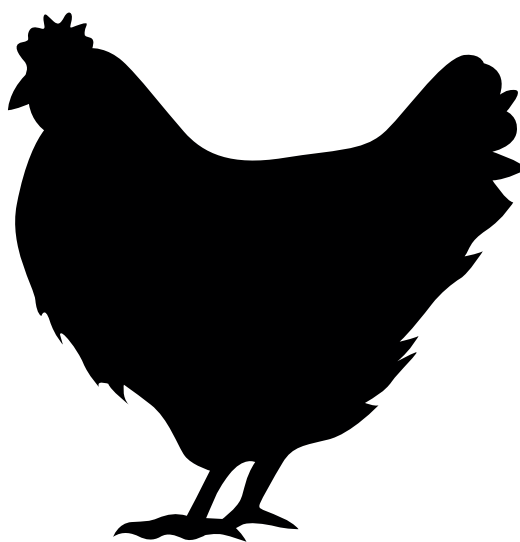
Formato: 400x515mm  
Material: Hierro  
Espesor: 2 mm





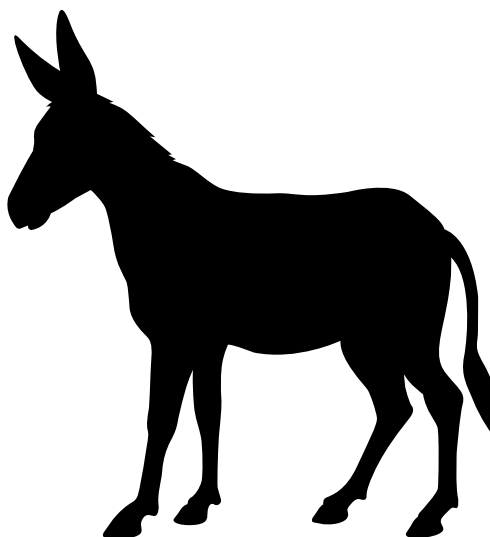
Ref. S004

Formato: 400x408mm  
Material: Hierro  
Espesor: 2 mm



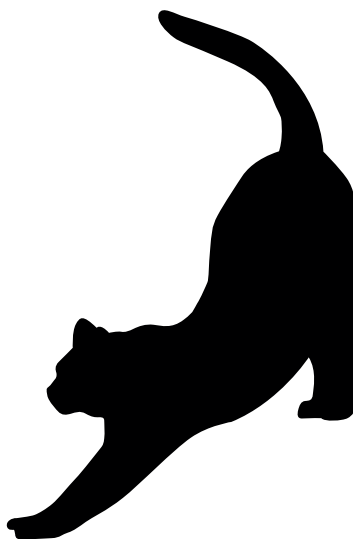
Ref. S005

Formato: 400x430mm  
Material: Hierro  
Espesor: 2 mm



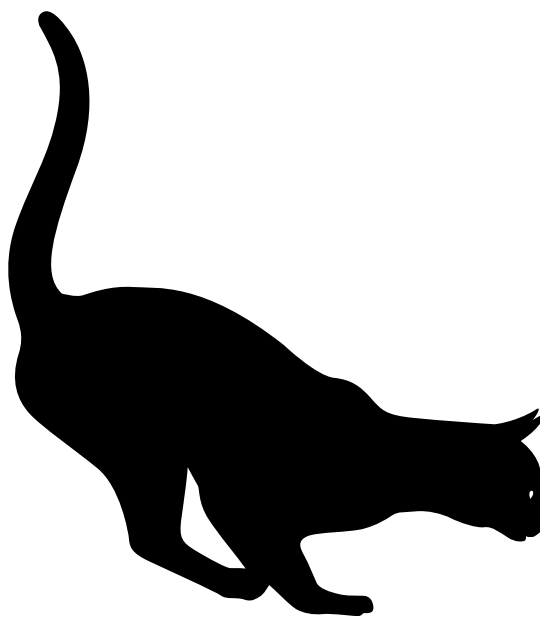
Ref. S006

Formato: 400x595mm  
Material: Hierro  
Espesor: 2 mm



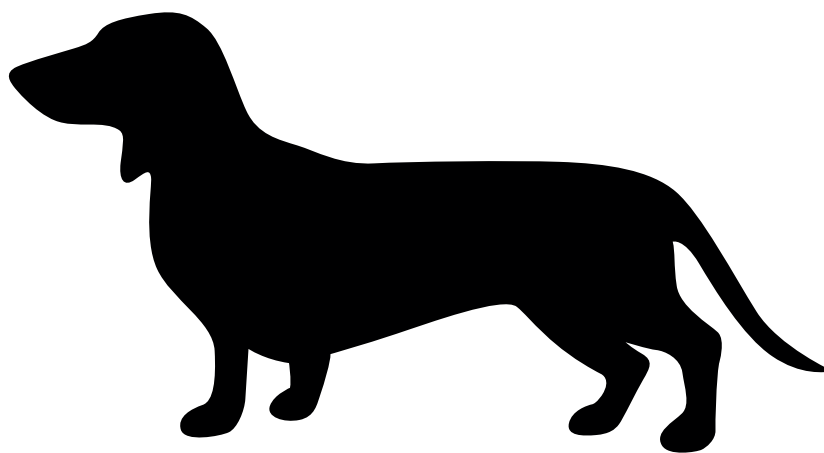
Ref. S007

Formato: 400x452mm  
Material: Hierro  
Espesor: 2 mm



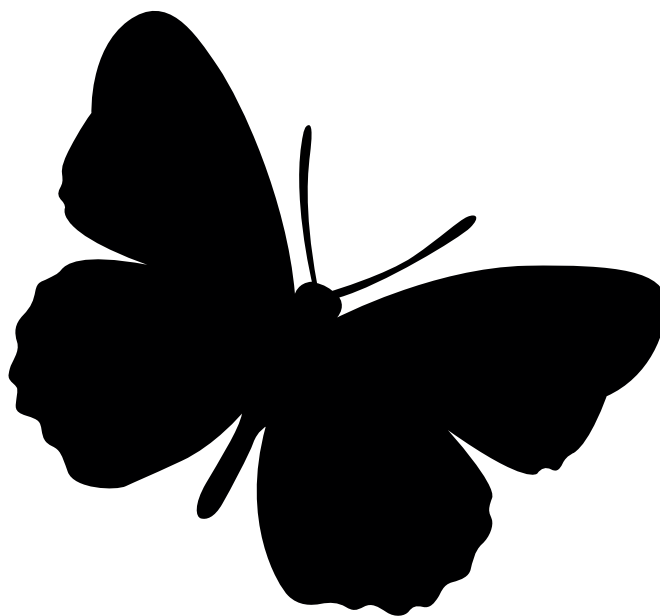
Ref. S008

Formato: 400x213mm  
Material: Hierro  
Espesor: 2 mm



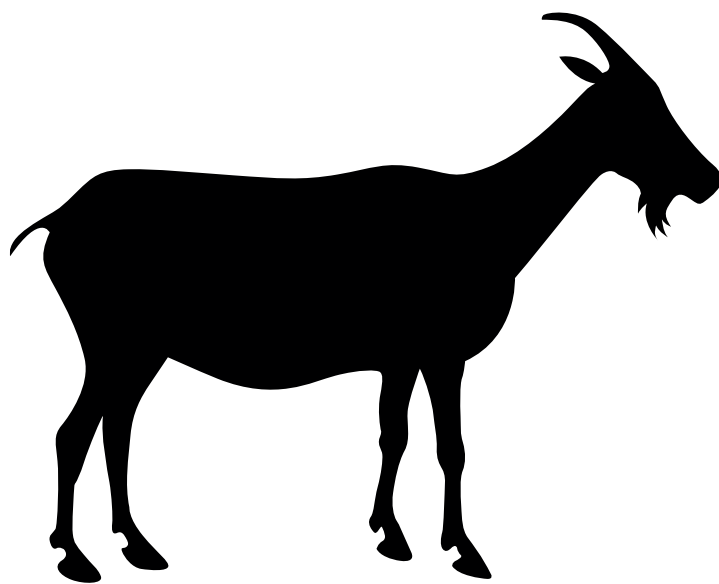
Ref. S009

Formato: 400x370mm  
Material: Hierro  
Espesor: 2 mm



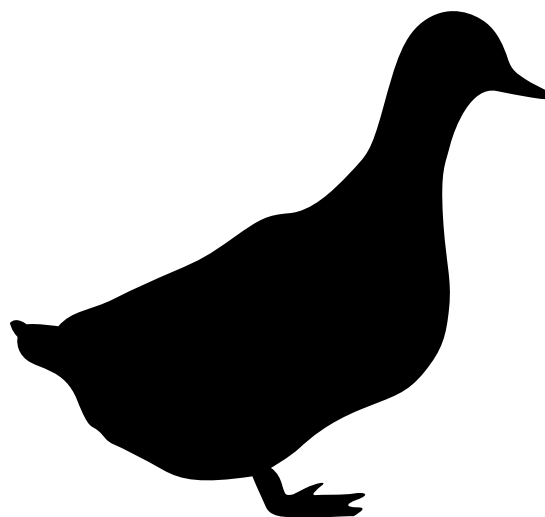
Ref. S010

Formato: 500x320mm  
Material: Hierro  
Espesor: 2 mm



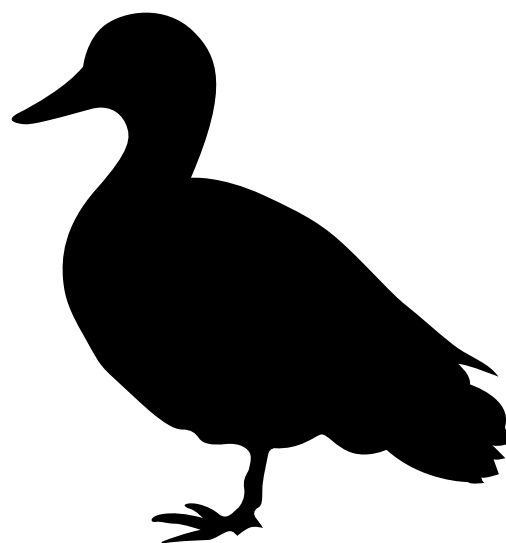
Ref. S011

Formato: 500x375mm  
Material: Hierro  
Espesor: 2 mm



Ref. S012

Formato: 500x420mm  
Material: Hierro  
Espesor: 2 mm



Ref. S013

Formato: 258x400mm  
Material: Hierro  
Espesor: 2 mm



Ref. S014

Formato: 142x300mm  
Material: Hierro  
Espesor: 2 mm



Ref. S015

Formato: 179x300mm  
Material: Hierro  
Espesor: 2 mm



Ref. S016

Formato: 173x300mm  
Material: Hierro  
Espesor: 2 mm



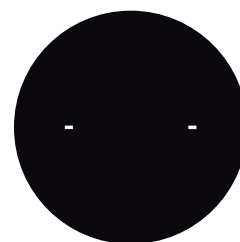
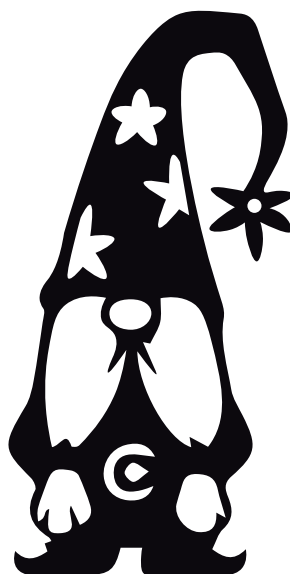
Ref. S017

Formato: 151x300mm  
Material: Hierro  
Espesor: 2 mm



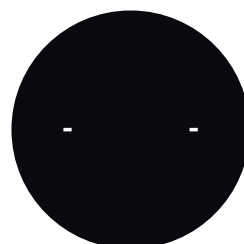
Ref. S018

Formato: 250x495mm  
Material: Hierro  
Espesor: 2 mm



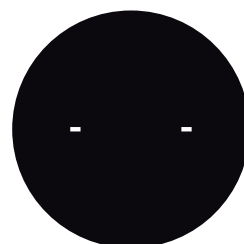
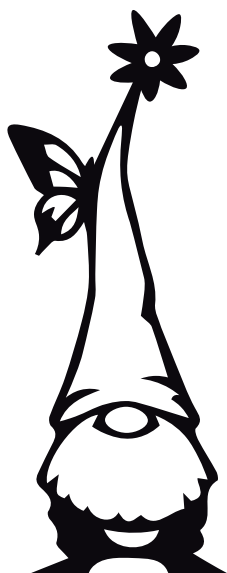
Ref. S016

Formato: 190x470mm  
Material: Hierro  
Espesor: 2 mm



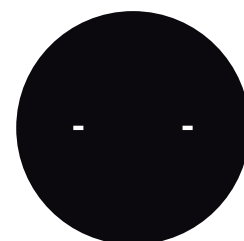
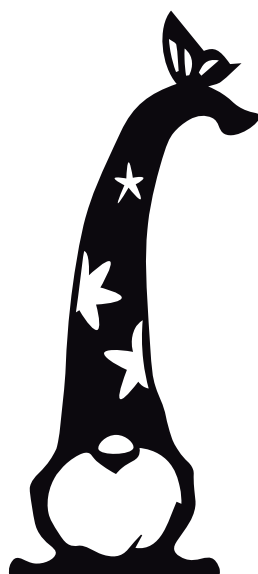
Ref. S017

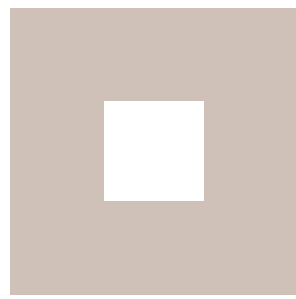
Formato: 150x380mm  
Material: Hierro  
Espesor: 2 mm



Ref. S018

Formato: 175x395mm  
Material: Hierro  
Espesor: 2 mm





# Contacto

Puede ponerse en contacto con nosotros para pedir presupuesto, solicitar asesoramiento o hacer cualquier tipo de consulta.



info@pachecoforja.com



923 24 33 98



606 96 34 48 (whatsapp)



www.pachecoforja.es

Si desea venir de manera presencial, nuestras oficinas están ubicadas en:



Calle SEGUNDA (POL.IND. EL MONTALVO III), 28,  
BAJO, 37188 Carbajosa de la Sagrada, Salamanca.



facebook



instagram

www.pachecoforja.es  
info@pachecoforja.com